

OMNI BEACHWOOD

23205-23245 Mercantile Road, Beachwood, OH 44122



TOTAL AREA: 1-Story Office/Flex Building, 32,215 SF

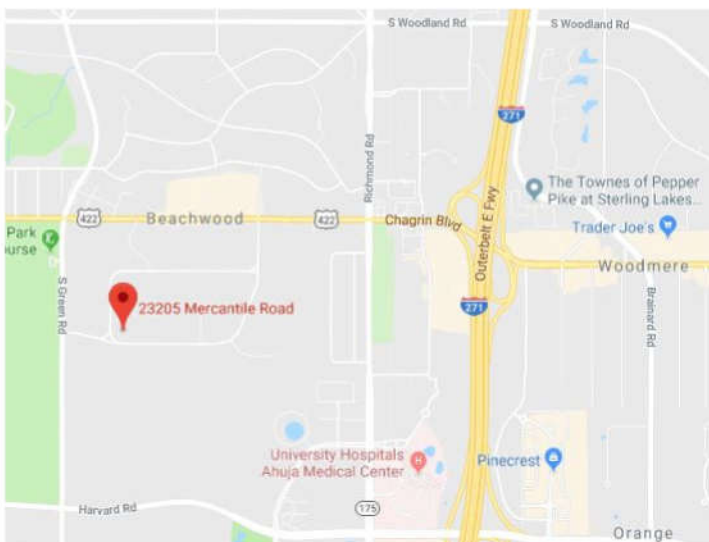
AVAILABLE FOOTAGE: 2,000 - 6,891 Rentable Square Feet

RENTAL RATE: \$11 Net, Net, Net

FEATURES: Upgraded loft type office space, 24/7 access and HVAC control

PARKING: More than ample surface parking directly at suite entrance

LOCATION: Convenient access to I-271, tremendous location within a large business district with signalized intersection at entrances/exits



KING
GROUP

The King Group Realty

25550 Chagrin Blvd., Suite 300 Beachwood, OH 44122

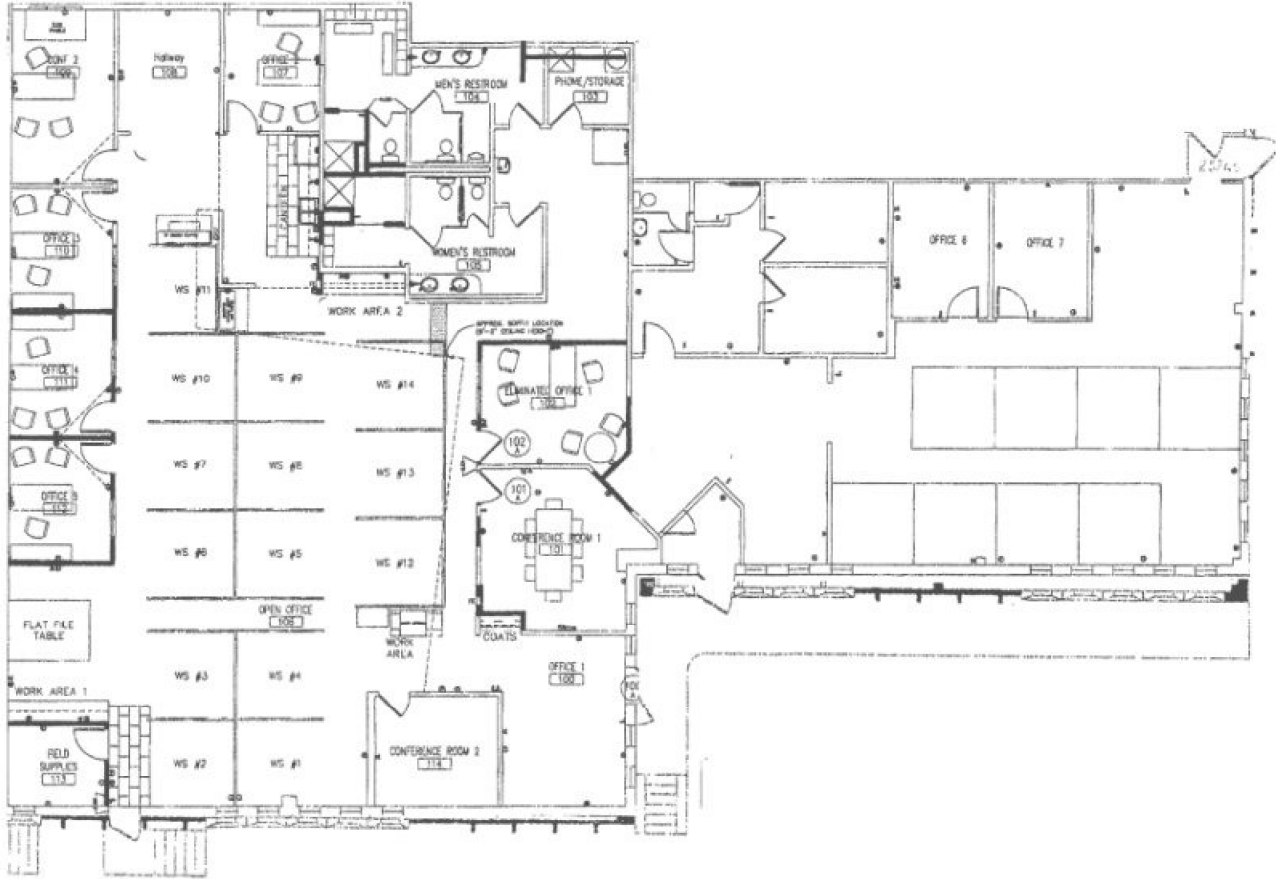
Ph: 216.831.9330 F: 216.831.8879 www.thekinggroup.com

Offered By: Dick Bialosky

216-245-0680

DBialosky@thekinggroup.com

OMNI BEACHWOOD



KING
GROUP

The King Group Realty

25550 Chagrin Blvd., Suite 300 Beachwood, OH 44122

Ph: 216.831.9330 F: 216.831.8879 www.thekinggroup.com

Offered By: Dick Bialosky

216-245-0680

DBialosky@thekinggroup.com